

HYCON HPP09E POWER PACK



PRODUCT FEATURES

HYCON HPP09E is our smallest electric power pack. It has a heavy-duty industrial motor, which enables use everywhere 3x400 V - 16A is available. Compact in size and electric driven.

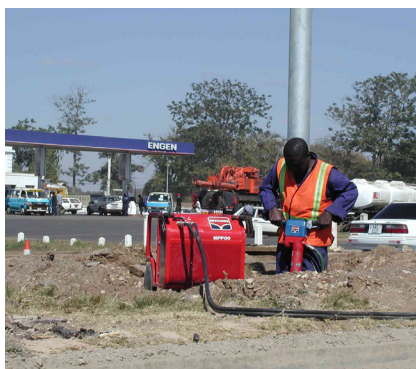
Therefore, perfect for indoor operation of any 20lpm tools, with maximum performance.

It is used by contractors, companies specialized in concrete drilling/cutting, the rental business and other specialized companies.

Transportation in any car is done easily, due to the compact design of the power pack.

HYDRAULIC POWER PACK HPP09E

Item no. HPP09E	2020055
Oil flow, l.p.m.	1x20
Max pressure, bar	150
Motor	5.5 kW 16A/3x400V 50 Hz
Dimensions: LxWxH, mm / Weight, kg	710x550x645 / 80
Noise level 1m L _{PA} dB	84
Noise level 1m L _{WA} dB	97



Contact us for more information:
hycon@hycon.dk / +45 96 47 52 00

THE HYCON PRODUCT RANGE

CUT-OFF AND RING SAWS • CORE DRILLS • POST DRIVERS • PICK HAMMER • LIGHT & HEAVY DUTY BREAKERS
SUBMERSIBLE PUMPS • ROCK DRILLS • UNDERWATER EQUIPMENT • GASOLINE, DIESEL AND ELECTRIC POWER PACKS



HYCON A/S
Juelstrupparken 11
DK-9530 Støvring

Tel +45 9647 5200
Fax +45 9647 5201
www.hycon.dk

DISTRIBUTOR: