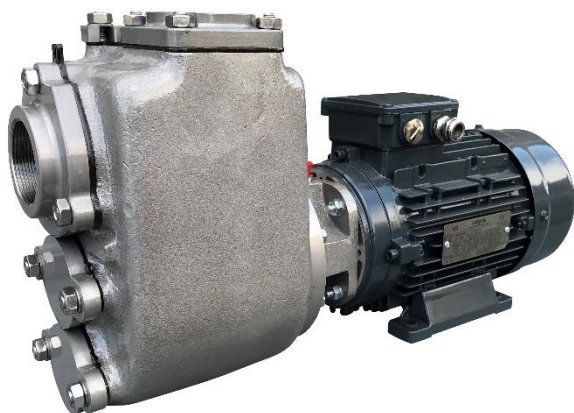


## B70 Electric Drive Self-Priming Centrifugal Pump Max. 82 m<sup>3</sup>/hour, Max. 20 mwc



### Pump specifications:

Type.....	B70 BVKMC
Max. flow .....	82 m <sup>3</sup> /hour
Max. head.....	20 mwc
Materials .....	Stainless steel
Connections.....	3" BSP
Free passage.....	22 mm
Pump speed .....	2850 rpm
Electric motor.....	4 kW - 2 pole
Voltage .....	400/690V
Assembly .....	Monobloc
Pump casing finish	.Sprayed in RAL 5010
Weight (net) .....	60 kg

## FEATURES

### B self-priming centrifugal pump

The B range of pumps has been designed with a clear focus on reliability, efficiency and durability, ranging from 1-1/2" to 12". Featuring an open impeller configuration in combination with a changeable wear plate, facilitating servicing and minimising costs of spares. All B series pumps are fitted with a non return valve in the suction port, eliminating the need for a foot valve in suction line and allowing quick priming.

### Design features

- Basic, reliable technology
- Large solids handling capacity
- Suitable for use with hot fluids
- Cooled shaft seal
- Extended life due to pump design
- Available with ATEX approval

### Fields of application

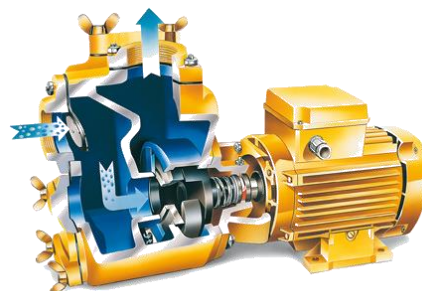
- Shipping
- Industry
- Construction
- Waste water management
- Emergency pump units
- Irrigation
- Agriculture
- Horticulture

### Complete package designed & built by BBA Pumps

- Complete in-house design & production
- Over 60 years of experience in the market
- Extensive testing facility in-house
- Contemporary & functional design
- Durable & eco-friendly materials
- Custom builds available

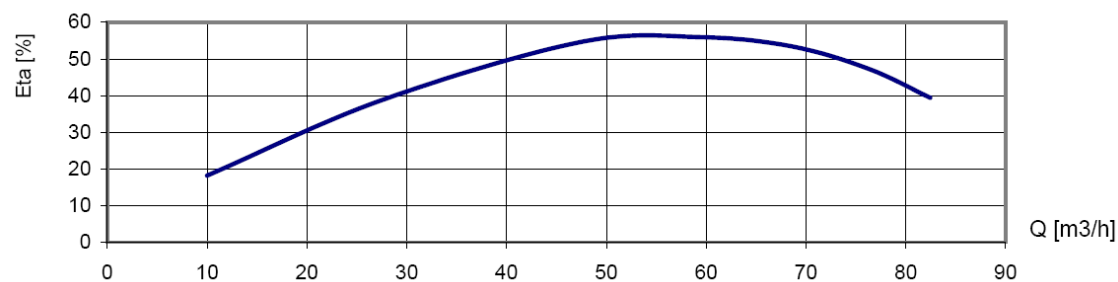
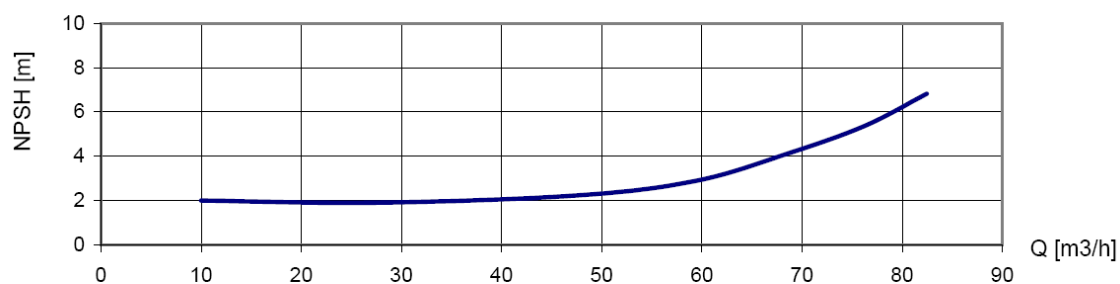
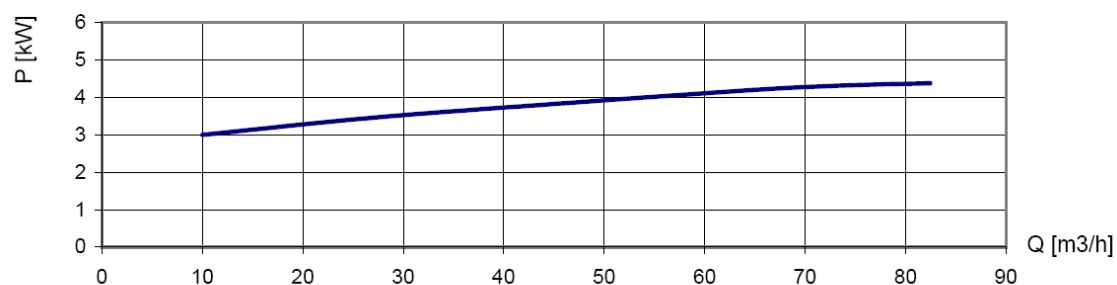
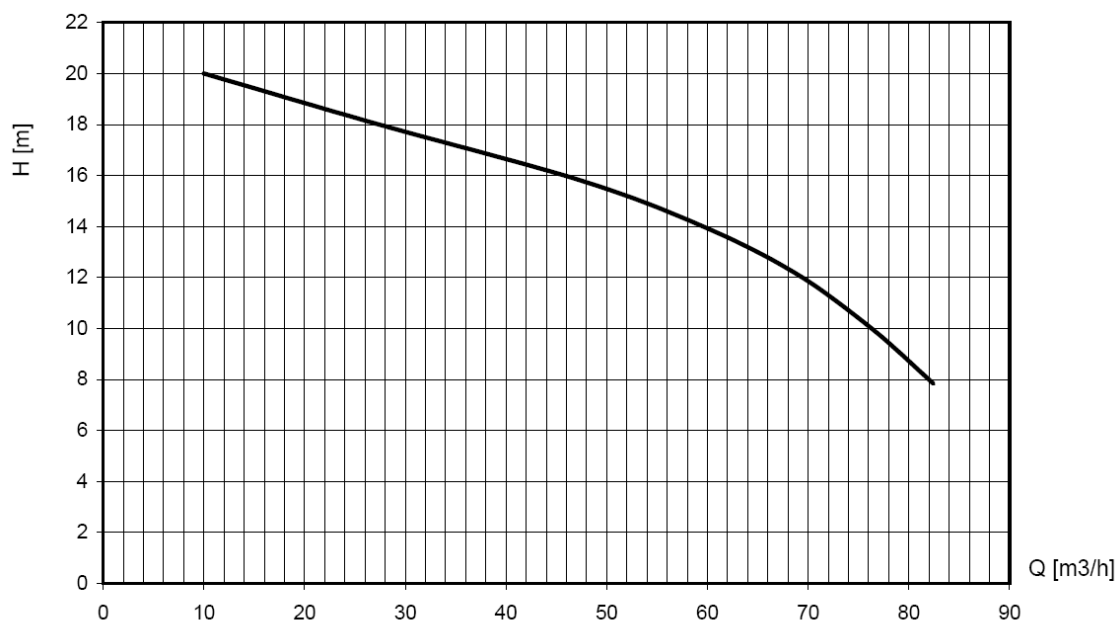
### After sales service & product support

- Single supplier for parts, spares & accessories
- Dedicated customer help-desk (24h service)
- Dedicated service department in-house
- Global parts distribution network
- Optional global on-site servicing
- Extensive training options available (technical & commercial), on-site or in-house



## PERFORMANCE CURVES (2850 RPM)

Continuous duty according ISO 9906



## STANDARD TECHNICAL SPECIFICATIONS

### BBA centrifugal pump

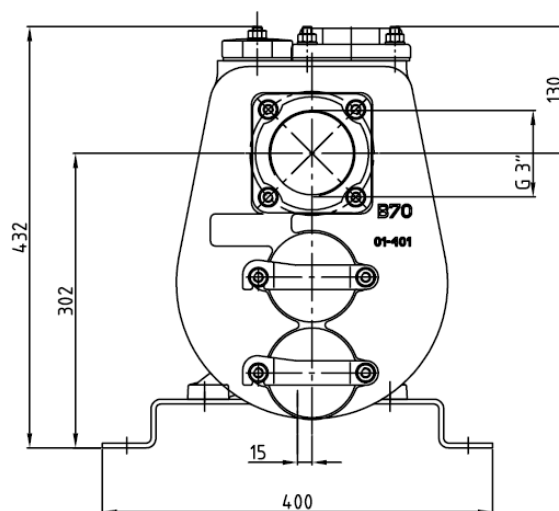
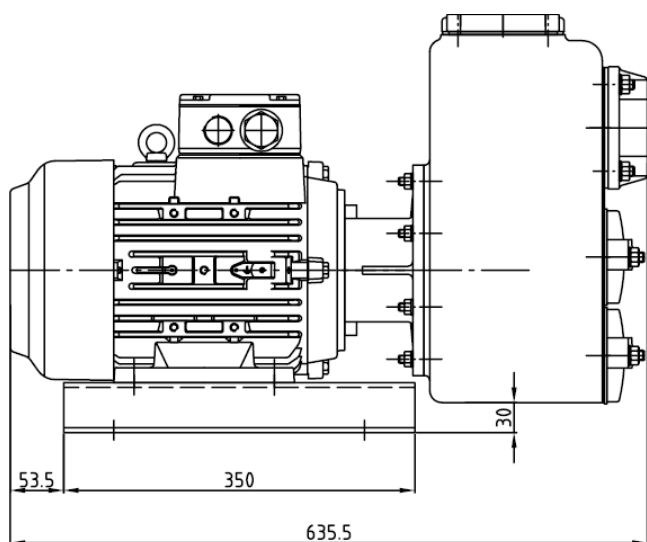
Model..... B70 BVKMC  
Max. flow..... 82 m<sup>3</sup>/hour  
Max. head..... 20 mwc  
Free passage..... 22 mm  
Pump speed..... 2850 rpm  
Connections..... 3" BSP

### Electric motor

Power..... 4 kW – 2 pole  
Voltage..... 400/690 V  
Frequency..... 50 Hz  
Mounting..... B3/B14A, IP55, ISO F  
Assembly..... Monobloc

### Materials

Pump casing ..... 316 stainless steel  
Wear plate ..... 316 stainless steel  
Impeller..... 316 stainless steel  
Shaft seal ..... Mechanical seal  
Seal faces ..... Sic / Sic / Viton  
Pump shaft..... 316 stainless steel  
Gaskets ..... Viton



## OPTIONAL FEATURES

### Mechanical seals

T3W seal..... HM / HM / Viton  
MG1 seal ..... Sic / Sic / EPDM

### Gaskets

N NBR: Perbunan  
V FPM: Viton  
E EPDM  
T PTFE: Teflon  
K FFKM, Kalrez

### Extras

+F ..... DIN flanges  
+FK..... DIN flanges, stainless steel 316  
+BI..... Bronze impeller; stainless steel 316 shaft  
+BII..... Bronze impeller/wear plate, stainless steel 316 shaft  
+KI..... Stainless steel 316 impeller and shaft  
+KII..... Stainless steel impeller, wear plate and shaft  
+M ..... Cutting blade  
+P ..... Perma grease cartridge  
+VP ..... Grease glass for seal lubrication  
+KF..... Wheelbarrow frame  
60Hz.... Motor 440V – 60Hz